

HabiStat



Tall Terrainium Assembly Instructions

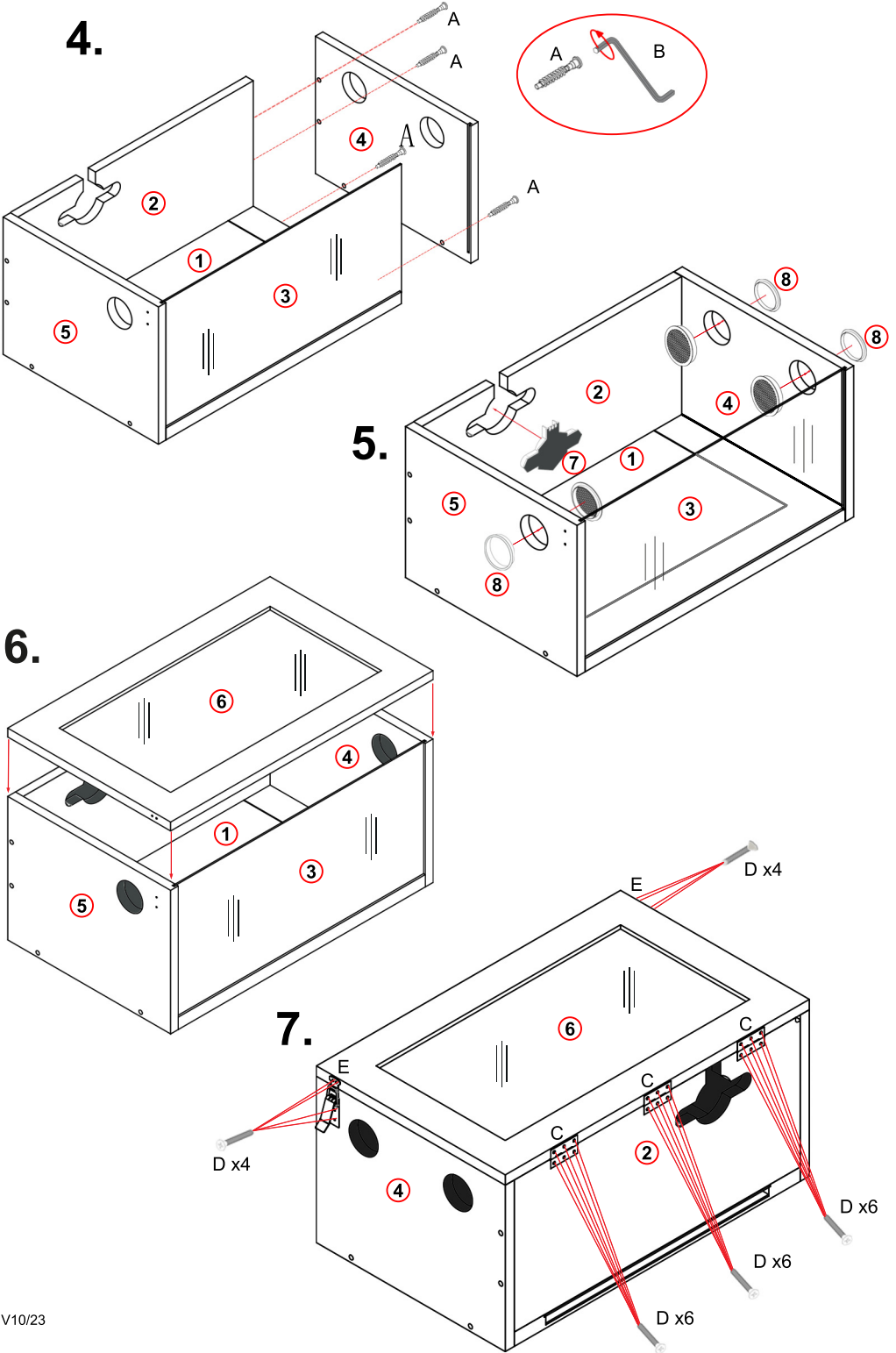
24T

HT24T, HT24TB
61 x 38 x 30cm
24" x 15" x 12"



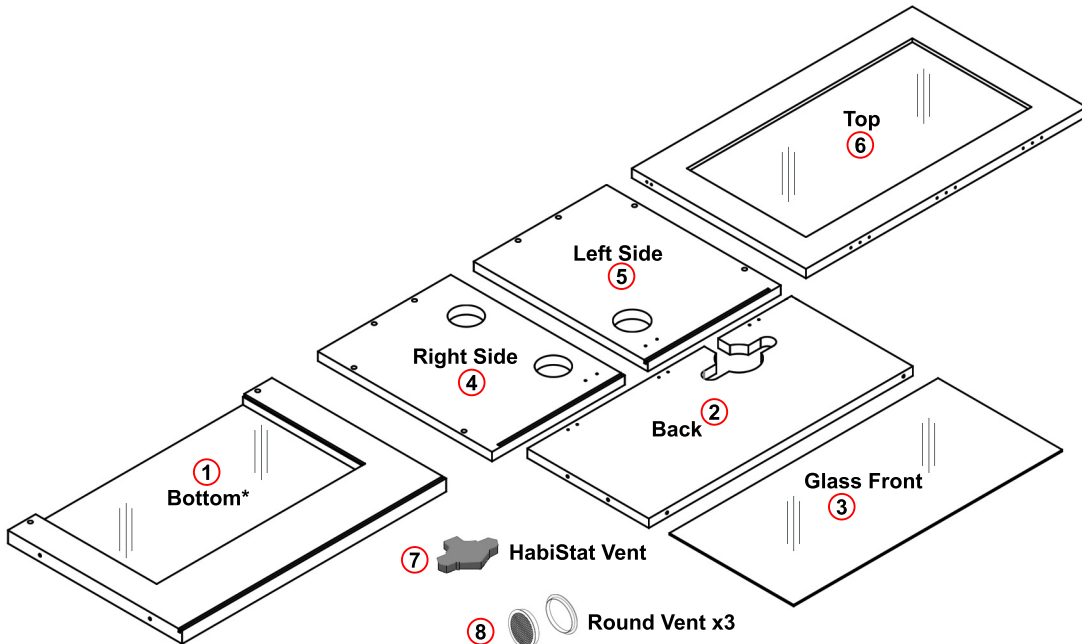
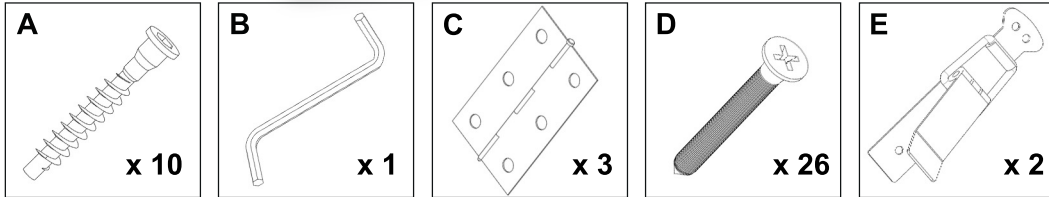
INFORMATION

Monkfield Nutrition Ltd, Arthur Rickwood Farm, Chatteris Road, Mepal, Ely, Cambridgeshire, CB6 2AZ
www.habistat.com info@habistat.com



HabiStat Tall Terrainium Assembly Instructions

Thank you for choosing a HabiStat product. Please read the instructions carefully and refer to diagrams before use. Retain all documents for future reference.



* Do not remove black foam insulation from bottom panel

