

GB Setup

Suitable for many species including Tarantulas, Millipedes, Scorpions and Snails

1. Terrarium Placement

- Do not place Terrarium near a heat source (e.g. radiator) or near windows as this will affect Terrarium temperatures.

2. Add Substrate

- Cover the bottom of the Terrarium with the substrate.
- Ensure the layer of substrate is deep enough for burrowing.

3. Monitor Temperature

- Use the thermometer provided to monitor the temperature inside the Terrarium
- Place the thermometer probe on top of the coconut cave or on top of the substrate.

4. Add Décor

- Ensure there is a 1" circumference around the coconut cave.
- Provide fresh drinking water in the dish.

5. Feeding

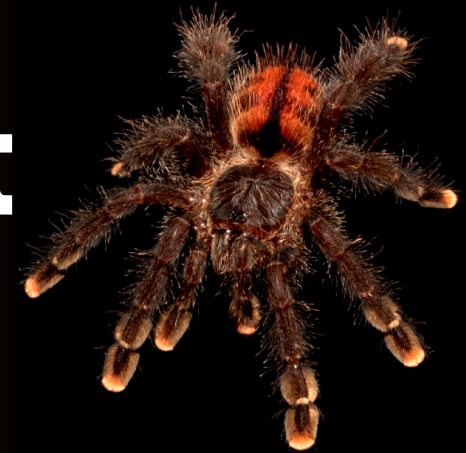
- Use the plastic feeding tongs when feeding live food to your animal.

6. Humidity

- Lightly spray the Terrarium with water to increase humidity levels and assist when species are moulting.
- Humidity requirements may vary by species.

Note: The products enclosed in the kit may vary based on availability, but the basic setup and instructions should remain the same. Please follow all safety guidelines and read the individual instructions provided for each product for proper usage and care of your Spider.

HabiStat Spider Starter Kit



CONTENTS*



Glass Terrarium
30 x 30 x 32cm



Digital Thermometer



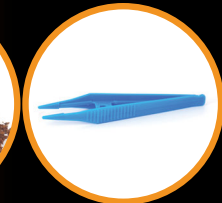
Coconut Cave



Dish



Coir



Plastic Feeding Tongs