

GB HabiStat Leopard Gecko Accessory Kit – Detailed Setup Instructions

Vivarium Placement: Keeping the vivarium away from any heat source and windows within the home is strongly recommended. Incorrect placement can cause temperature fluctuations. Refer to instructions enclosed in the vivarium how to build. Some of the below installation may be easier to carry out prior to affixing the top of the vivarium.

HabiStat Dimming Thermostat: Place the Thermostat probe on top of the bedding underneath the heat source, preventing obstructions to provide accurate readings. Set the temperature to 30°C (86°F) by turning the dial on the Thermostat unit. Refer to individual instructions for installation advice. Do not connect any electrical equipment into the mains until set up complete.

Arcadia Ceramic Lamp Holder and Arcadia Pro T5 UVB Kit: Position both the UVB Kit and Ceramic Lamp Holder to the inside of the enclosure roof using the screws provided. Once installed insert the ShadeDweller bulb into the UVB Kit. Refer to individual instructions for installation advice. Do not connect any electrical equipment into the mains until set up complete.

HabiStat Heat Guard and HabiStat Bulb: Attach the Heater Guard around the Ceramic Lamp Holder using the screws provided. Once installed open the hinged bottom and insert the bulb.

Digital Compact Thermometer: Place the Thermometer probe within the basking area of the enclosure alongside the Thermostat probe. This will give you an accurate reading in the required area. You are now ready to connect the electrical equipment. Please refer back to the product instructions on how to safely complete.

Substrate: Place your chosen substrate into the base of the enclosure. Make sure the enclosure doors are closed for this next step.

Temperature Check: Ensure all doors are closed for a minimum of 30 minutes for the enclosure to heat up before monitoring. The basking area should be between 30-32.2°C (86-90°F). Adjust the dial on the Thermostat accordingly if these parameters are not being achieved. Continue to monitor over the next few hours. Please note opening the doors will affect the temperature but will stabilise when complete HabiStat Plastic Hide & Moss. Place the Plastic Hide into the middle, towards the rear of the enclosure. Add Moss inside the hide to create a moist hide. Keep the Moss damp by spraying with fresh water daily.

HabiStat Coconut Caves: To be placed in the cool and basking areas towards the rear of the enclosure.

HabiStat Water Bowl: Place in the cool end of the enclosure and replace with fresh water daily.

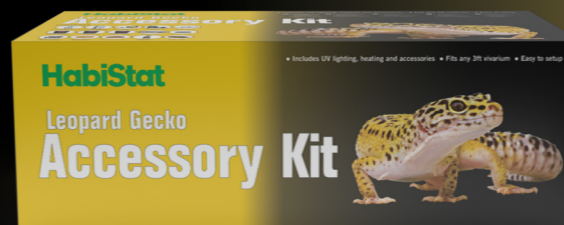
HabiStat Natural Calcium, Repton & Calcium Dish: Use the supplements when dusting insects for consumption. Add a little Calcium into the dish provided for an additional calcium boost.

HabiStat Insecta Snack: Use as a livefood supplement to add nutritional value.

HabiStat Bactericidal Cleaner: To be used to disinfect décor along with maintenance of the enclosure.

Enclosed product may differ due to availability.

HabiStat Leopard Gecko Accessory Kit



CONTENTS



Dimming Thermostat
600W



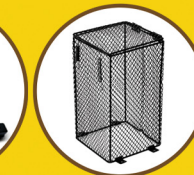
Pro T5 UVB Kit,
7% UVB
ShadeDweller, 8W



Basking Spotlamp
100W



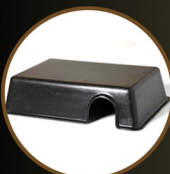
Pro Ceramic
Lampholder
and Bracket



Heat Guard



Digital Compact
Thermometer



Plastic Hide



Coconut Cave x2



Round Plastic
Water Bowl



Calcium Dish



Moss



Natural Calcium



Insecta Snack



Repton



Bactericidal
Cleaner